



➤ Quick-Start Guide

SERVISION MULTICLIENT APPLICATION



Copyright

Copyright © 2011 SerVision Inc. All Rights Reserved.

Introduction

To view video from SerVision's video gateways, you must use a client application: the *MultiClient* application for PCs, or a cellular client for smartphones. This document provides a quick overview of setting up and using the MultiClient.

If you want to use a PC to view video from a video gateway, the PC must be connected to a network. Furthermore, if the video gateway is not connected to the same network as the PC, both networks must be able to communicate with one another. This is usually accomplished through the internet.

This document explains how you can use the MultiClient to view live video from a SerVision video gateway. If you have access to a SerVision video gateway, you can use the MultiClient to view the video from that video gateway. SerVision also maintains a demo video gateway, to which you can connect freely via the internet.

NOTE: For a complete description of the MultiClient, including display of live and recorded video, event monitoring, device activation, and other features, please refer to the *MultiClient User Guide*, which can be downloaded from the SerVision website (<http://www.servision.net>).

Installing the MultiClient

⇒ *To install the MultiClient on your PC:*

1. Download the latest version of the MultiClient setup program from the website (<http://www.servision.net>). The setup file is called **Setup-MultiClient-SV-x.x.x.x.exe**. (The software version number appears in place of "x.x.x.x".)
2. Double-click the downloaded setup file. The setup program starts.
3. Follow the on-screen instructions to install the application.

Opening the MultiClient

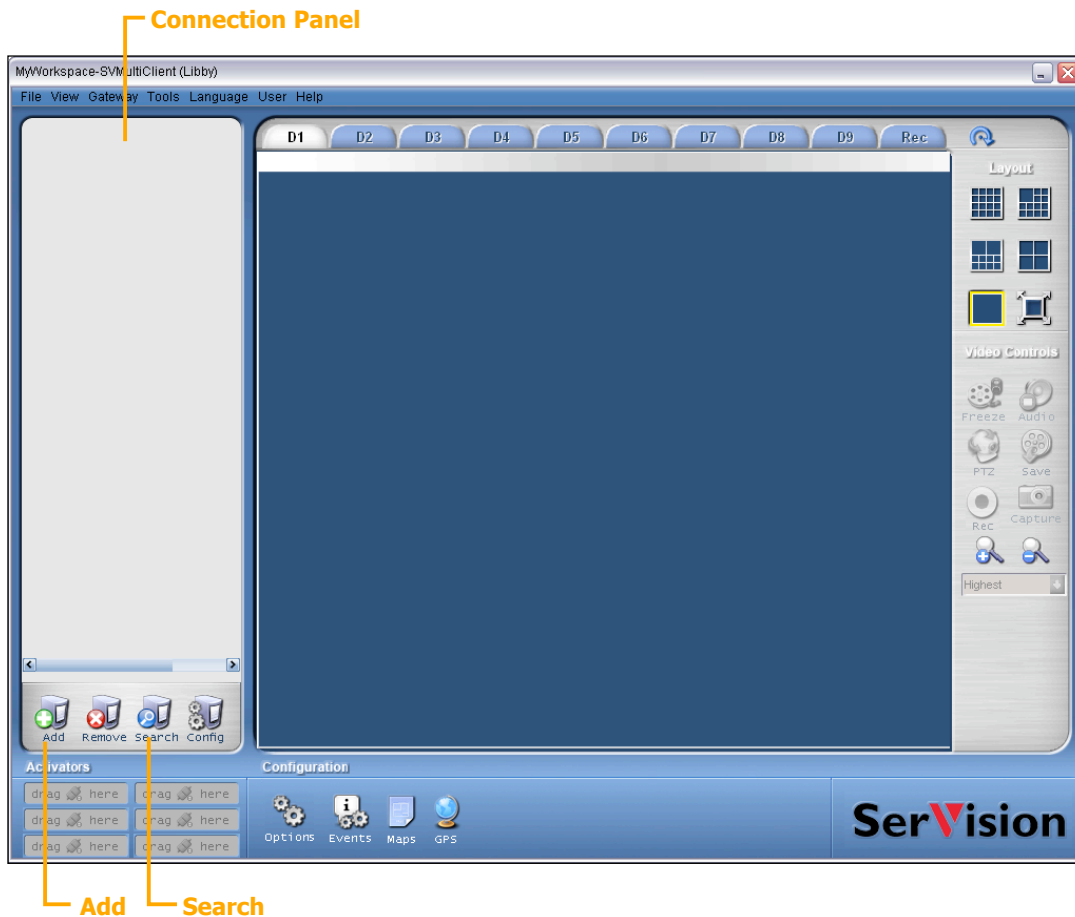
⇒ *To open the MultiClient:*

- Double-click the MultiClient icon on the PC's Desktop:



MultiClient Desktop icon

The MultiClient window opens:



MultiClient window

Connecting to a Video Gateway

The method you must use to connect to a video gateway varies depending on whether the PC and the video gateway are on the same network or are connecting to one another remotely (e.g., through the internet).

⇒ **To connect to a video gateway that is on the same network as the PC:**

1. At the bottom of the **Connection Panel**, click the **Search** button.

The **Find Gateway** dialog box opens, and displays a list of all the video gateways connected to the network:

2. Enter the IP address or internet hostname (URL), the port, and the username/password combination for the video gateway to which you want to connect. If you want to use an encrypted connection, select the type of encryption to use (if available).

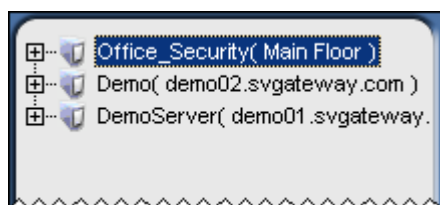
NOTE: See *Demo Video Gateway*, at the end of this document, for the connection information for the demo video gateway.

3. Click **Connect**.

The MultiClient connects to the video gateway. The name and description of the video gateway are displayed in the **Connection panel** on the left side of the main window (see figure above).

A successful connection is indicated by a (+) sign before the video gateway name in the **Connection panel**. If no (+) sign appears, this indicates that the MultiClient has not yet succeeded in connecting to the video gateway, and there may be a connection problem.

You can connect to more than one video gateway simultaneously. To do so, repeat the steps above as necessary to add each video gateway. When the MultiClient is connected to multiple video gateways, all of the video gateways are listed in the **Connection panel**:



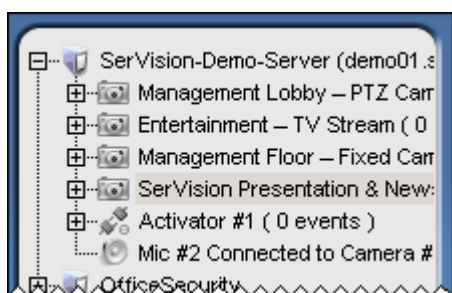
Multiple video-gateway connections

Viewing Video in the MultiClient

Once the MultiClient is connected to a video gateway, you can begin to view video from the video gateway.

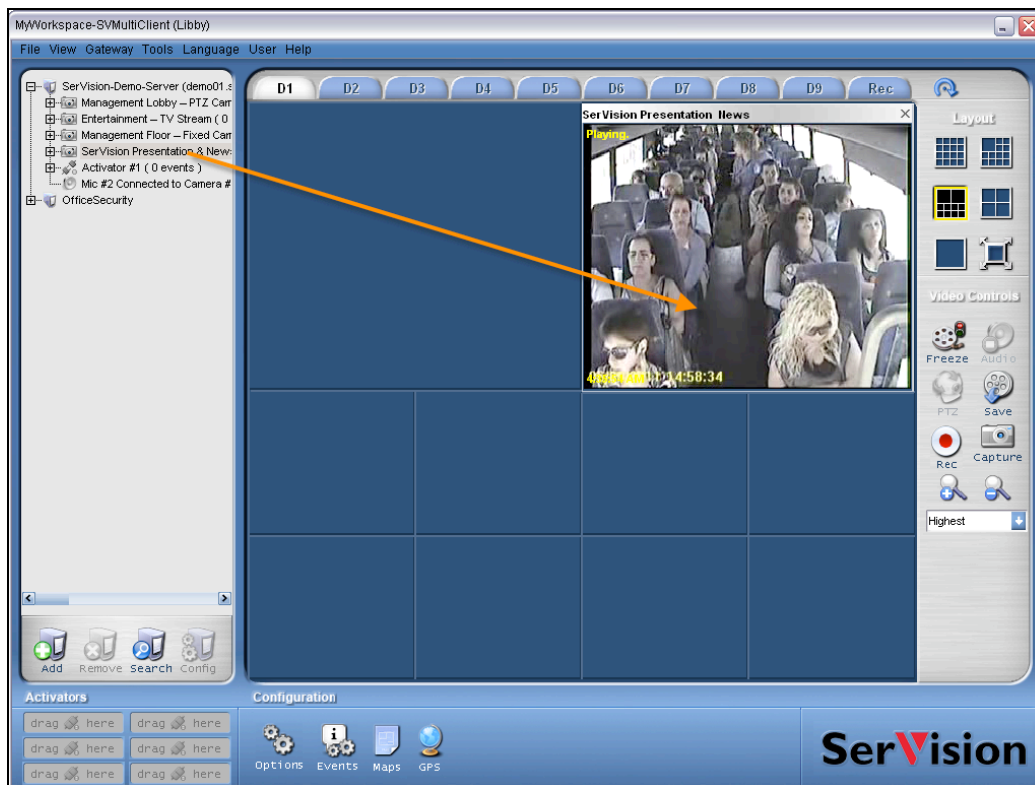
⇒ **To view video from a connected video gateway:**

1. Click the (+) sign beside the name of the video gateway. A list of enabled cameras, sensors, and activators connected to the video gateway is displayed below its name:



List of devices connected to a video gateway

2. Drag a camera from the list to one of the MultiClient camera panes (squares) in the right panel of the MultiClient window. Live video from the camera is displayed in the pane.



Video displayed in the MultiClient

Demo Video Gateway

If you would like to see a demonstration of video display from the SerVision demo video gateway, use the MultiClient to connect to it with the following settings:

- **IP:** demo01.svgateway.com
- **Port:** 9980
- **Username:** guest
- **Password:** guest